

# Umpqua Soil & Water Conservation District

## 2023 Annual Report



# Your Partner in Conservation Since 1953

•In the early 1930's parallel with the Great Depression came the ecological disaster known as the Dust Bowl. The Dust Bowl began as a long, severe drought in the Great Plains region causing soil to erode and blow away creating huge black dust storms. Eventually, these dust storm reached the entire nation and dust even sifted onto President Franklin D. Roosevelt's desk from the dust clouds. While soil scientist Hugh Hammond Bennett was testifying on Capitol Hill about the erosion problem he threw back the curtains to reveal a sky blackened by dust. Congress unanimously passed the Soil Conservation Act of 1935 declaring soil and water conservation a national policy and priority. Since  $\frac{3}{4}$  of the land in the United States is privately owned Congress concluded active, voluntary support from landowners would guarantee success of conservation work on private land. Landowners then formed the soil conservation districts in each of their states. The Umpqua Soil & Water Conservation District was established on April 30, 1953.

•Conservation Districts can be described as the local committee that increases public awareness and participation in resource conservation. Conservation Districts represent cooperators since cooperators are land users who can speak for the land, and develop plans for resource conservation bringing together entities to work on local common conservation problems. Districts identify barriers preventing land conservation and bring proposed solutions to governing bodies. Conservation Districts are best described as the marriage of education, science and technology in agriculture and natural resources at the local level.

Dust storm approaching Stratford, Texas  
April 1935

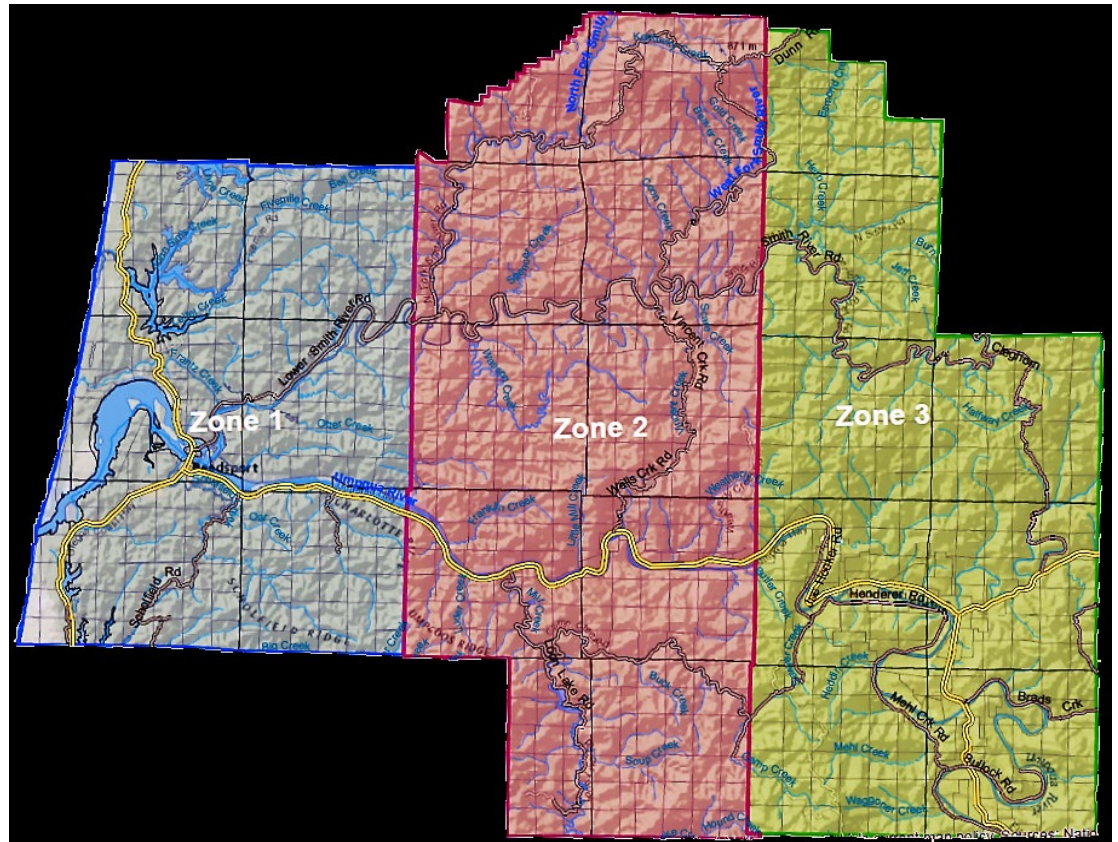


*Photo Courtesy of: NOAA George E. Marsh Album*

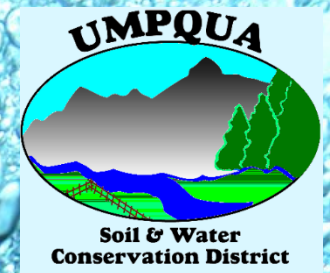


# Our Location

The Umpqua Soil & Water Conservation District boundaries encompass 600,000 acres of northwestern Douglas County in the Lower Umpqua watershed including Winchester Bay, Reedsport, Gardiner, Tahkenitch, Siltcoos, Five-Mile, Smith River, Scottsburg, Ash Valley, Elkton, and Kellogg.



# Who We Are



A five-member Board of Directors elected in the general election serve without pay to administer District activities.

## Directors

- Zone 1 – Thomas Black
- Zone 2 – Bob Miller
- Zone 3 – Vacant
- At-Large 1 – Vacant
- At-Large 2 – Cliff Glover

## Staff

- Rhonda Black – District Manager/Certified Conservation Planner

Meetings are held the second Thursday of the month at 6:30 p.m. The public is welcome and encouraged to attend meetings, which are held on the virtual Go-To-Meeting platform.



“The mission of the locally led Umpqua Soil and Water Conservation District is to provide assistance to any individual, group, or agency in applying natural resource conservation practices for the wise use of their natural resources”

# Our Projects



## Umpqua Estuary Restoration Partnership

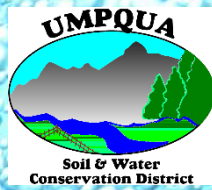
Culvert Missing Tide Gate



Tide Gate & Culvert in Good Condition

Beginning in 2011 and funded by a BLM RAC grant the District began locating and prioritizing tidegates throughout the District for future maintenance and replacement with fish friendlier options for interested landowners. The inventory is now complete with prioritization continuing through the UERP Partnership – a group consisting of interested agencies who provide technical assistance to the Umpqua SWCD and watershed councils involved with tidegates.

# Our Projects



## Umpqua Estuary Restoration Partnership – UERP

*UERP's Objective Goals:*

*“Sustain active productive agricultural lands in balance with lands suitable as estuaries for the benefit of aquatic habitat.”*



UERP Tidegate Tour – Umpqua & Smith Rivers

As the District moved forward locating tidegates the prioritization process it became apparent additional input was needed through local partners. The District helped form the Umpqua Estuary Restoration Partnership and continues as the lead organization.

In April 2014 a Memorandum of Understanding was signed into effect between the District and the Partnership for the Umpqua Rivers to work on tidegate projects and related grants projects as a joint effort and a Technical Assistance Grant was submitted to the Oregon Watershed Enhancement Board for outreach, education, to continue the prioritization process, and for engineering.

UERP consists of members with representatives from Umpqua Soil and Water Conservation District, Natural Resources Conservation Service, Partnership for Umpqua Rivers, Smith River Watershed Council, Confederated Tribes of the Coos, Siuslaw, and Lower Umpqua Band of Indian Tribes, National Marine Fisheries, Oregon Department of Fish and Wildlife, Bureau of Land Management, United States Forest Service, Oregon Department of Agriculture, Oregon Department of State Lands, and the U.S. Army Corps of Engineers. The team meets to prioritize tidegates for replacement, repair, or removal using a variety of data based factors. The team provides technical assistance, funding options, and oversight for tidegates in the Umpqua Estuary.

# Funding & Agriculture Water Quality



Image from the USDA.

Learn more about the AgWQ Program by going to:

<https://www.oregon.gov/oda/progr/ams/NaturalResources/AgWQ/Pages/AgWQPlans.aspx>

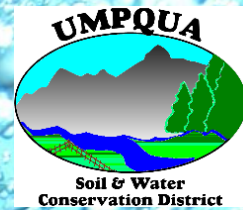
## Oregon Watershed Enhancement Board (OWEB) District Capacity Grant

Umpqua Soil & Water Conservation District receives funding through a capacity grant similar to those obtained by Watershed Councils.

This capacity grant provides funding for the SWCD to work with landowners to conserve natural resources and lend support to the Oregon Department of Agriculture (ODA) Agriculture Water Quality Management Program (AgWQ).

With this grant the SWCD is able to provide technical assistance to land managers/producers within the district for implementing Agriculture Management Practices to improve agriculture water quality in their daily farming/ranching operations, no matter how large or small the operation may be.

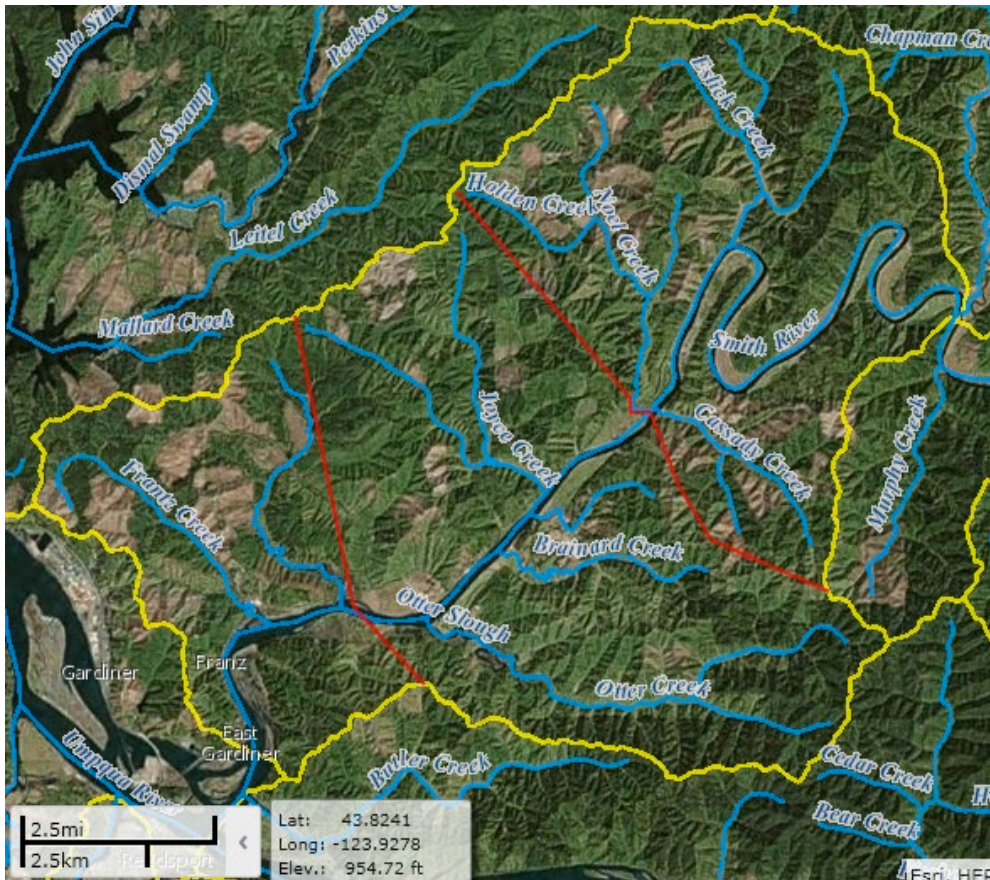




# Our Projects

## Oregon Department of Agriculture Scope of Work: Umpqua SWCD –Smith River: Otter to Fingerboard Reach Focus Area Action Plan

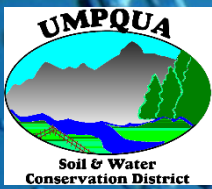
*Umpqua Basin AgWQ Management Area*



Map explanation:

Yellow line is the boundary for HUC #171003030707. Focus Area is the middle ~1/3 of the HUC, between the two red lines. Blue lines are major streams (1:100k stream layer). Not all perennial and intermittent streams are shown.





# Our Projects

## **Smith River: Otter to Fingerboard Reach Watershed:**

### **Basis for Selection of Focus Area:**

*Umpqua SWCD worked with the Oregon Department of Agriculture, Oregon Department of Fish and Wildlife, and the United States Department of Agriculture Natural Resources Conservation Service to select the Otter and Brainard Creeks combined watersheds as the original focus area. For the 2017-2019 biennium additional lands have been added to this focus area due to these lands being adjacent to the current focus area and the work that is currently be proposed by Umpqua SWCD and partner agencies and watershed councils. The selection was based on: percent of existing contacts and relationships (landowner willingness to participate), agricultural use in the combined watersheds, condition of streamside vegetation, and the capacity of the SWCD taking into account how the SWCD has discussed working in the area in the past. Additional factors are tide gates within watersheds on agricultural land that contribute to water quality conditions. The Oregon Department of Fish and Wildlife provided input into the selection process and provided information on listed fish species. Fish species of concern in the Focus Area include Coho, Chinook, and Winter Steelhead. Oregon Coast ESU Coho salmon rear in Otter, Brainard, Black, and Joyce Creeks, and in the mainstem of the Smith River, that the streams flow into. Coho spawning takes place in the upper reaches of Otter Slough and Joyce Creek. Fall Chinook utilize the mainstem of the Smith River for rearing. Winter steelhead utilize Otter and Brainard Sloughs for spawning and the mainstem Smith River for rearing.*

### **Water Quality Parameters of Concern:**

*A Total Maximum Daily Load for temperature, and in some spots for biological criteria, applies to the Smith River of which both Otter and Brainard Creeks are tributaries to. The Umpqua SWCD's goal is to improve water quality for these parameters by working with landowners to remove streamside agricultural impacts allowing streamside vegetation to establish and grow, and improve upland forage. Land condition assessment and measures to reduce nutrient loads will be taken into account.*

### **Description of Assessment Method(s):**

*Stream temperature will be evaluated using riparian vegetation condition as a surrogate. Aerial photos and field verifications will be used to evaluate riparian vegetation condition and to determine if the vegetation is adequate to provide the functions as identified in the Area Plan and Rules. Possible use of aquatic biological monitoring may be used as well along with pH and temperature monitoring.*



# Small Grants Program

Umpqua SWCD is a member of both the  
Coos #4 & Umpqua #7 Oregon Watershed Enhancement Board  
Small Grant Teams

## **From OWEB:**

“The Small Grant Program is an easy-to-engage-in, competitive grant program that awards up to \$15,000 for on-the-ground restoration projects principally carried out on private lands across Oregon. This program responds to a need for local decision-making about watershed restoration opportunities on a shorter timeframe than is available under OWEB’s regular grant program.

The Small Grant Program enables landowners across the state to contribute to the [Oregon Plan for Salmon and Watersheds](#) and the [Oregon Conservation Strategy](#) by committing “small acts of kindness” on their properties for the benefit of water quality, water quantity, and fish and wildlife. From planting native plants along stream sides to reducing sedimentation and erosion from upland farms and ranches, citizens everywhere can make a difference.”

More information can be found at: <https://www.oregon.gov/oweb/grants/small-grants/pages/small-grants.aspx>

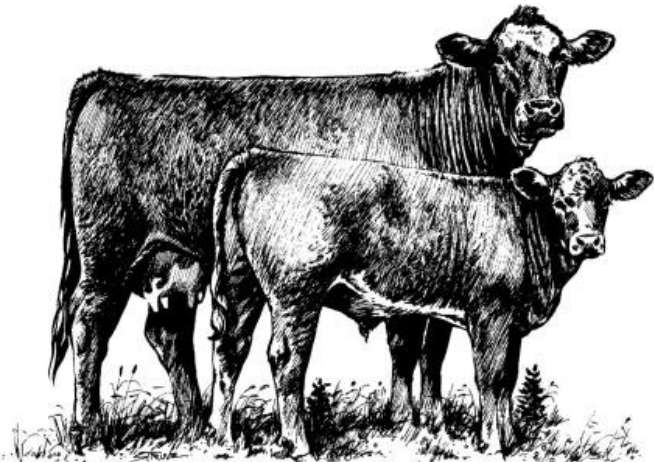
Currently, the District has 3 OWEB Small Grants in the process of being implemented for the following management practices:


- Heavy Use Protection Areas
- Runoff Management
- Livestock Exclusion Fencing
- Off-Stream Watering Facilities



# Information & Outreach

**Soil Testing** is a service the District provides to area residents. By testing soil residents know how much fertilizer and what kind of fertilizer they need to amend their soil with reducing over-fertilization and the risk of having excess fertilizer wash into rivers and streams. Soil testing is funded by ODA.





**AgSource**  
Laboratories

323 Sixth Street  
Umatilla, OR 97882  
Tel: 541-922-4894  
umatilla@agsource.com

Soil Analysis

Submitted By: **UMU20151**  
**UMPQUA SOIL AND WATER CONSERVATION**  
**REEDSPORT, OREGON 97467**

Submitted For: \_\_\_\_\_  
Laboratory Sample # **A004598**

Date Received \_\_\_\_\_

Date Reported \_\_\_\_\_

Information Sheet # **S5655**

**Sample #1**

**Sample #2**

**Sample #3**

**Sample #4**

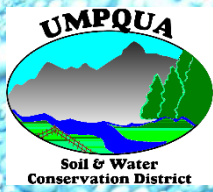
**Sample #5**

**Sample #6**

SUMMARY OF SOIL FERTILITY AND PLANT NUTRIENT GUIDELINES

Sample Identification	Crop Yield or Turf/Organimal Code	Lime Opayum Sulfur	PLANT FOOD NEED IN: lbs./Acre											
			N	P <sub>2</sub> O <sub>5</sub>	K <sub>2</sub> O	MgO	S	Zn	Mn	Cu	Fe	B		
1-GARDEN	Garden	Lime 16720.0	—	46.0	—	—	—	1.0	—	—	—	—	—	0.8
Average Guidelines for:			—	46.0	—	—	—	1.0	—	—	—	—	—	0.8
Garden			—	46.0	—	—	—	1.0	—	—	—	—	—	0.8

Page 2 of 2



# Information & Outreach

## OSU Soil Health Workshop & OSU Mud & Manure Management Workshop

Funded through the Oregon Department of Agriculture the District was able to provide information directly to landowners in partnership with Oregon State University Extension Service Douglas County.

**OSU SMALL FARMS Douglas County**  
**Soil Health Management**  
 For AG Land and Pastures



Presented by OSU Extension and the Umpqua Soil and Water Conservation District

Learn best management practices for increasing soil tilth on farms and pastures. During this presentation, learn how to improve return on investment in crops and forage, take and interpret soil samples. Learn strategies to minimize erosion and runoff while improving soil quality on farms and ranches.

November 18th, 2022  
 6:30 pm- 8:00 pm

Elkton Community Education Center Library  
 15850 OR-38 W,  
 Elkton, OR 97436  
 Cost: \$10

Contact Logan Bennett for questions:  
 logan.bennett@oregonstate.edu  
 (541) 236-3015

Register at: <https://beav.es/iHt>  
 call (541) 672-4461  
 or click on the QR code

Registration will end on November 11th.

 **Oregon State University**  
 Extension Service  
 Douglas County

 OSU Extension Service prohibits discrimination in all its programs, services, activities, and materials. This publication will be made available in an accessible alternative format upon request. Accommodation requests related to a disability should be made by November 11th, 2022. Please contact Logan Bennett, (541) 236-3015, logan.bennett@oregonstate.edu.

**OSU EXTENSION Douglas County**  
**Mud and Manure Management**



Healthy land leads to healthy animals. Horses and Livestock are important parts of many peoples lives, but often times the paddocks and pastures these animals inhabit can become muddy, mucky, and unclear. Learn how to improve and manage your livestock living areas in this workshop.

**Lecture and hands-on workshop**  
 March: Discussion focused on management techniques to reduce mud and manure in the field and paddock. Technical assistance for land improvement  
 June: Field tour of ranchland that has been impacted by trampling and erosion, followed by improvement techniques. Funding for land improvement may be available.

**COST: \$15.00**  
 Register online: <https://beav.es/iHt>  
 or click on the QR code  
 or call 541-672-4461  
 Registration required  
 by March 12th.

**March 22nd, 2023**  
 5:00 - 7:00 pm  
 Tour to follow in June

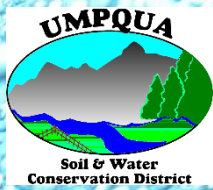
1134 SE Douglas Ave, Roseburg, Oregon 97470

 **Oregon State University**

OSU Extension Service prohibits discrimination in all its programs, services, activities, and materials. Accommodation requests related to a disability should be made by 2/12/2023 to Logan Bennett, 541-236-3015, logan.bennett@oregonstate.edu.

# Education & Outreach



## Tsalila Education Days

Funded through the U.S. Forest Service the District is able to reach out to students by providing hands on training about benthic macro invertebrates and how these little creatures are indicators of water quality and stream health.



SWCD District Manager/Conservation Planner Rhonda Black provides students with information & instruction prior to students setting off to the “pools” on for scientific benthic macro invertebrate sampling and identification.



**3<sup>rd</sup> Grade Students from Douglas, Coos, Curry, and Lane County schools learning about benthic macro invertebrates at the “Bug Zone” during the Tsalila Festival.**

# Our Projects

## Weed Wrench Loan Program

Originally funded through the BLM RAC the District continues to promote the Weed Wrench Loan Program to District residents. The Weed Wrench is a “woody plant puller” which works by using leverage to remove plants such as scotch broom by the root which is effective and easy to use. The cost is a \$25 refundable fee for 2-weeks use.



# Newsletters & Newspaper Articles

The District's Facebook utilizes its quarterly newsletter and local Dunes News newspaper to reach out to the community by providing information to the public about the District along with information about:

- Events
- Meetings
- AgWQ Practices
- NRCS Information
- Grant Opportunities
- Community Information

## UMPQUA

### SOIL AND WATER CONSERVATION DISTRICT

P.O. Box 415, Reedsport, Oregon 97467 (541) 662-1341

Email: [rhonda@umpquasoilandwater.com](mailto:rhonda@umpquasoilandwater.com)

Facebook:  
[www.facebook.com/UmpquaSoilandWaterConservationDistrict](http://www.facebook.com/UmpquaSoilandWaterConservationDistrict)

Newsletter – March 2023

### Did you know that our Lower Umpqua area has its very own Soil and Water Conservation District?

Our area's soil and water conservation district is the Umpqua Soil and Water Conservation District (SWCD) and was founded in 1953. We've been here for almost seventy years serving the residents of northwestern Douglas County which includes the communities of Reedsport, Winchester Bay, Gardiner, Smith River, Talkenish, Ash Valley, Scottsburg, Elkton and Kellogg.

The Umpqua Soil and Water Conservation District is governed by a locally elected five-member board of Directors. District directors are elected on Oregon's general election ballot and serve four-year terms without pay. District directors are your neighbors. Men and women from your business and professional communities and the farmers and ranchers who understand the ecological relationship of soil, water, plants and animals. Current directors are Cliff Glover, Tom Black, and Bob Miller. Our district has two vacant positions on the board beginning in January 2023, and those positions are Zone 3 and A-Large 1. The Zone 3 position has a 10-acre land management/ownership requirement within the Zone 3 area located in the most eastern part of our District (Elkton and surrounding areas) along with being a registered voter, and the A-Large 1 position can be filled by a registered voter residing in either of these positions, please contact us.

Our District Manager/Conservation Planner is Rhonda Black and she can provide you with a variety of technical assistance options. Do you have a farm or ranch and need help with fencing, livestock watering system and feeding areas? Do you have mud or manure you need assistance with? We have options available for you. Do you have a culvert that needs to be replaced or run-off that you are concerned about? We can help with that. How about a toadgate that no longer works the way you want it to? Again, contact us. Umpqua Soil and Water is a non-regulatory agency, which means that when you ask us to come out for a visit, we aren't there for any other reason than to assist you. If you are in urban areas of the district, we can still provide assistance for back-yard type farming as well. We also offer free soil tests to our district residents. Yes, I said free! We can even come to your property and take the sample for you. Samples are sent to a certified lab for analysis and the information from these tests is sent back to you.

This spring we are partnering with Oregon State University Small Farms Program for Douglas County for a mud and

manure workshop which will be followed by a farm tour at a later date. If you are interested, please let us know.

We can also apply for grants on your behalf. Currently, we have small grants available through our small grant team that is funded by the Oregon Watershed Enhancement Board. These grants have funds available for materials and supplies up to \$15,000 for a two-year period.

We also put out a newsletter. If you would like to receive our newsletter, it is available both by email and hardcopy that can be mailed to you. Just contact us and let us know.

Our meetings are the second Thursday of each month at 6:30 p.m. Currently, our meetings are held virtually using an online platform. If you would like to attend our monthly meetings, they are available to the public. Please contact us for our agenda and meeting login information.

Let's work together! Please contact us by email at [rhonda@umpquasoilandwater.com](mailto:rhonda@umpquasoilandwater.com) or by telephone at (541) 662-1341. Please follow us on our Facebook page: [www.facebook.com/UmpquaSoilandWaterConservationDistrict](http://www.facebook.com/UmpquaSoilandWaterConservationDistrict)

### News from Umpqua Soil & Water Conservation District

Do you have horses or livestock such as cattle, sheep, goats, or pigs? Do you end up with mud in the winter and/or spring? Would you just like to learn more about best mud management? If so, we have a great workshop for you to attend!

**Mud & Manure Management Workshop and Field Tour**  
Workshop discussion focused on management techniques to reduce mud and manure in the field and paddock. Technical assistance for land improvement.

Register by March 12th by going to: <https://extension.oregonstate.edu/douglas/waters/mud-manure-management/> or by contacting Logan Bennett at [Logan.bennett@oregonstate.edu](mailto:Logan.bennett@oregonstate.edu) or by calling (541) 236-3005.

Healthy land leads to healthy animals. Horses and livestock on important parts of many people's lives, but often times the paddocks and pastures these animals inhabit can become muddy and sticky. Learn how to improve and manage your workshop bring areas in this workshop. Presenters: Tammy Barnes - Oregon State Extension Service Assistant Professor (Practice Animal and Rangeland Science), Logan Bennett - Oregon State Extension Service Small Farms Program Coordinator, Rhonda Black - Umpqua Soil & Water Conservation District Conservation Planner, and Cindy Bright - Douglas Soil & Water Conservation District Conservation Technician.

Field Tour of ranchland that has been impacted by trampling and erosion, followed

by improvement techniques. Funding for land improvement may be available.

When: June 2023. Exact date yet to be determined.

We also put out a newsletter. If you would like to receive our newsletter it is available both by email and hardcopy that can be mailed to you. Just contact us and let us know. —continued on page 2.

**LOCAL RV AND PRESSURE WASHING SERVICES**

RV Washing  
Hand Washing • Interior/Exterior • Wax/Polish

Pressure Washing/Real Estate  
Mobile • Commercial/Residential • Concrete  
Windows/Faithers • Debris Removal • Interior/Exterior

541-285-0552

Visit our website for a complete list of our services!

Mike Starfar • [starfar@propresswash.com](mailto:starfar@propresswash.com) • Licensed & Insured


**Dunes MEMORIAL CHAPEL**

541-271-2822  
2300 Frontage Road,  
Reedsport, OR



**OSU EXTENSION Douglas County Mud and Manure Management**

Lecture and hands-on workshop  
March 22, 2023 5-7pm  
1134 SE Douglas Ave., Roseburg  
Cost: \$15  
Register online: <https://beav.edu/HH>  
Call 541-672-4461  
Registration required by March 12.



DUNES NEWS

MARCH 9, 2023 | A3

# Website

## Website:

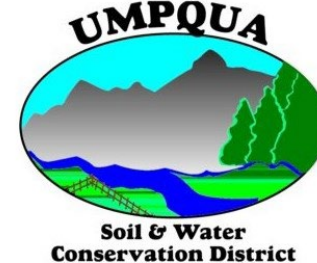
The District's new website provides information to the community and, while currently under construction, will grow with more information over time.

- Newsletters
- Events
- Meetings
- AgWQ Practices
- NRCS Information

<https://umpquasoilandwater.com/>

Umpqua Soil & Water  
Conservation District

Home



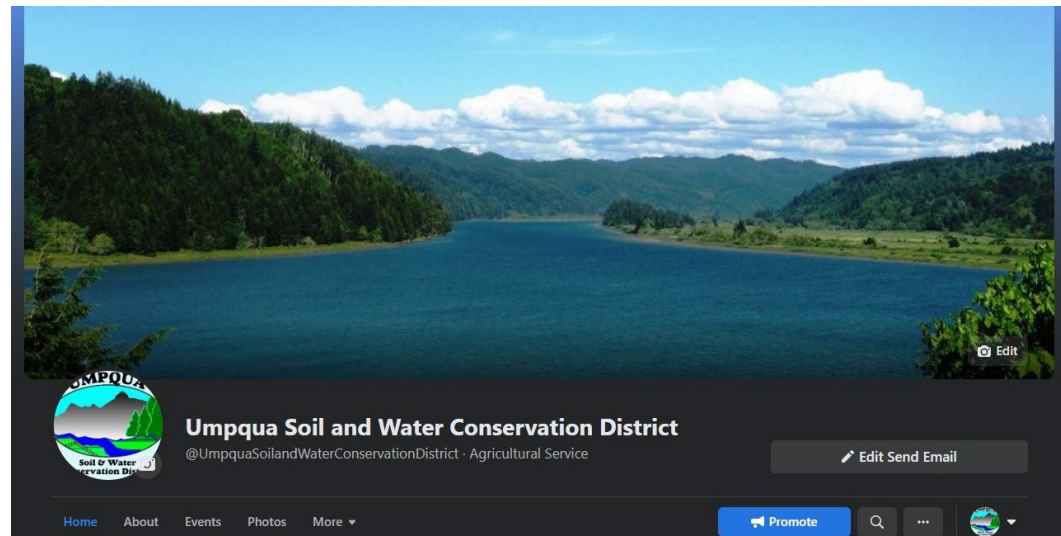


# Social Media

## Facebook Page:

The District's Facebook Page is used to reach out to the community.

- Events
- Meetings
- AgWQ Practices
- NRCS Information
- Community Information
- Other fun stuff



<https://www.facebook.com/UmpquaSoilandWaterConservationDistrict/>

# Our Partners

Umpqua Soil & Water Conservation District works with the following organizations to help residents with their conservation needs:

## **Watershed Councils:**

- Elk Creek Watershed Council
- Partnership for the Umpqua Rivers
- Siuslaw Watershed Council
- Coos Watershed Association

## **Soil & Water Conservation Districts:**

- Douglas SWCD
- Siuslaw SWCD
- Coos SWCD

## **Stewardship Collaboratives:**

- Smith-Umpqua-Dunes Stewardship Collaborative
- Oregon Central Coast Forest Stewardship Collaborative

## **Weed Management Groups:**

- Douglas County Weed Board
- Douglas County Cooperative Weed Management Area
- Gorse Action Group

## **Partnership Groups:**

- Umpqua Oaks Partnership
- Umpqua Native Plant Partnership
- Tsalila Partnership
- Oregon Conservation Education & Assistance Network

## **Environmental Groups:**

- The Nature Conservancy

## **Legislative Groups:**

- Oregon Association of Conservation Districts
- Special Districts Association of Oregon
- Oregon Coastal Zone Management Association

## **Cities:**

- City of Elkton
- City of Reedsport
  - Umpqua Discover Center



# Our Partners

Umpqua Soil & Water Conservation District works with the following organizations to help residents with their conservation needs:

## Federal Agencies:

- United States Department of Agriculture:
  - Bureau of Land Management
    - Coos Bay District
    - Roseburg District
  - Forest Service
    - Siuslaw National Forest
      - Dunes National Recreation Area
    - Umpqua National Forest
  - Natural Resources Conservation Service
- United States Department of Commerce:
  - National Oceanic & Atmospheric Administration:
    - National Marine Fisheries Service
      - Woods Hole Oceanographic Institution
        - » Center for Marine & Environmental Radioactivity

## State of Oregon Agencies:

- Department of Agriculture
  - Water Quality Program
  - SWCD
- Department of Education
  - Oregon State University
    - Division of Extension and Engagement
      - Douglas County Extension Service
        - » Forestry & Natural Resources
        - » Livestock Forages
        - » Small Farms
- Department of Environmental Quality
- Department of Fish & Wildlife
- Department of State Lands
- Watershed Enhancement Board



# Administration

## Umpqua Soil & Water Conservation District

For a copy of the District's Audit report please contact Umpqua Soil & Water Conservation District or go to the Oregon Secretary of State Audits Division online at <https://sos.oregon.gov/audits/Pages/muniaudits.aspx>

### ***OUR VISION STATEMENT***

“To be a respected, valued community organization committed to managing a natural resource base for future generations. To ensure sustainable agricultural and forest production, supporting functioning human, wildlife, fish and forest habitat.”



# Contact Information

## Umpqua Soil & Water Conservation District

P.O. Box 415

Reedsport, Oregon 97467

Office: (541) 662-1341

Email: [rhonda@umpquasoilandwater.com](mailto:rhonda@umpquasoilandwater.com)

Website:

<https://umpquasoilandwater.com/>

Facebook:

[www.facebook.com/UmpquaSoilandWaterConservationDistrict](http://www.facebook.com/UmpquaSoilandWaterConservationDistrict)

